

Safe Assembly of Thin Sheet
Metal Joints with Pilot Hole

K-TRACS SCREW

K-Tracs is a self-tapping screw designed to safely mount thin sheet metal joints. It specifically has an asymmetrical flank angle reduced to 45° to create a more secure female thread with a higher stripping torque level of the joint and, if needed, multiple repeat assemblies.

BENEFITS & FEATURES

- Strong screw joint
- Circular cross section for better thread engagement
- Quick alignment and low installation torque for an easy and safe assembly
- High stripping torque
- Metric compatible



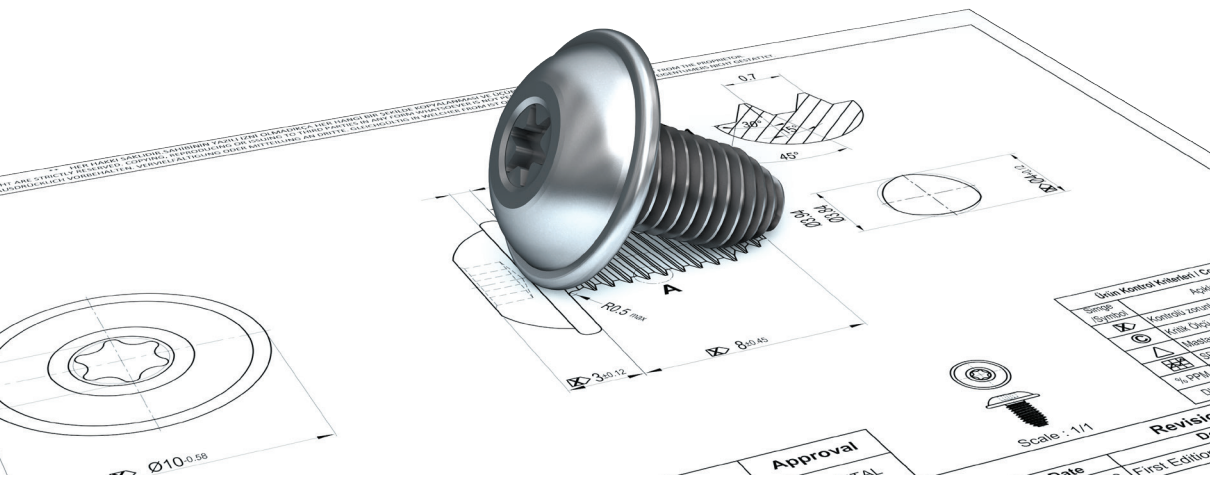
Asymmetrical 45° Flank Angle



Circular Cross Section



Trilobular Forming / Reverse Thread "R" Point



KEBA
FASTENINGS

For more information please contact:
Tel: Houston 832-871-5481 • Stuttgart 0711 2225 4129 • Istanbul +90 216 418 55 79

sales@kebafastenings.com ■ kebafastenings.com